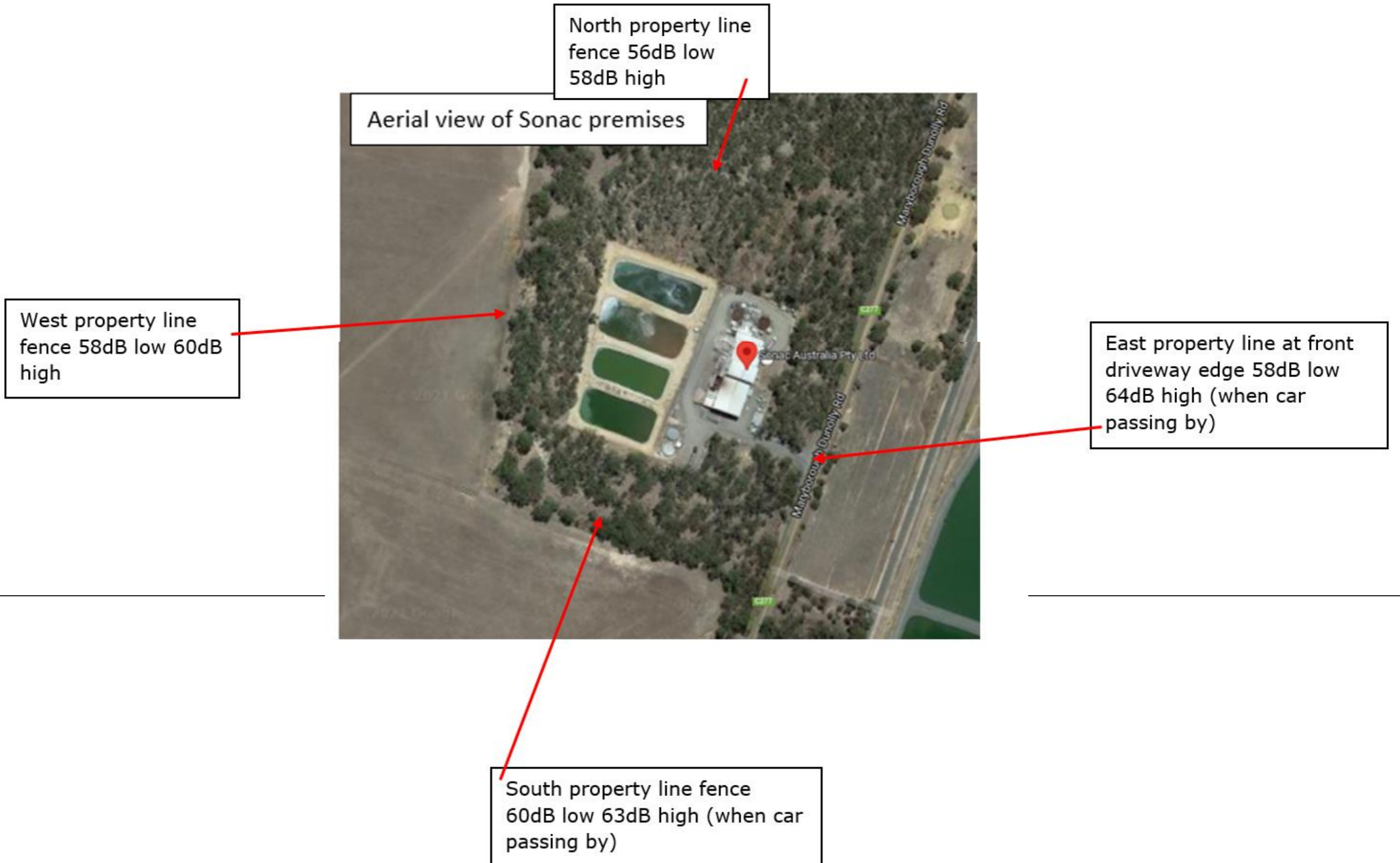


Attachment 1

Sonac Site - Perimeter Noise Measurements 5/4/22 @ 21:30HRS

Property perimeter noise levels, 21:30 pm, no wind, 5/4/2022. Measurements taken at arrow point locations:

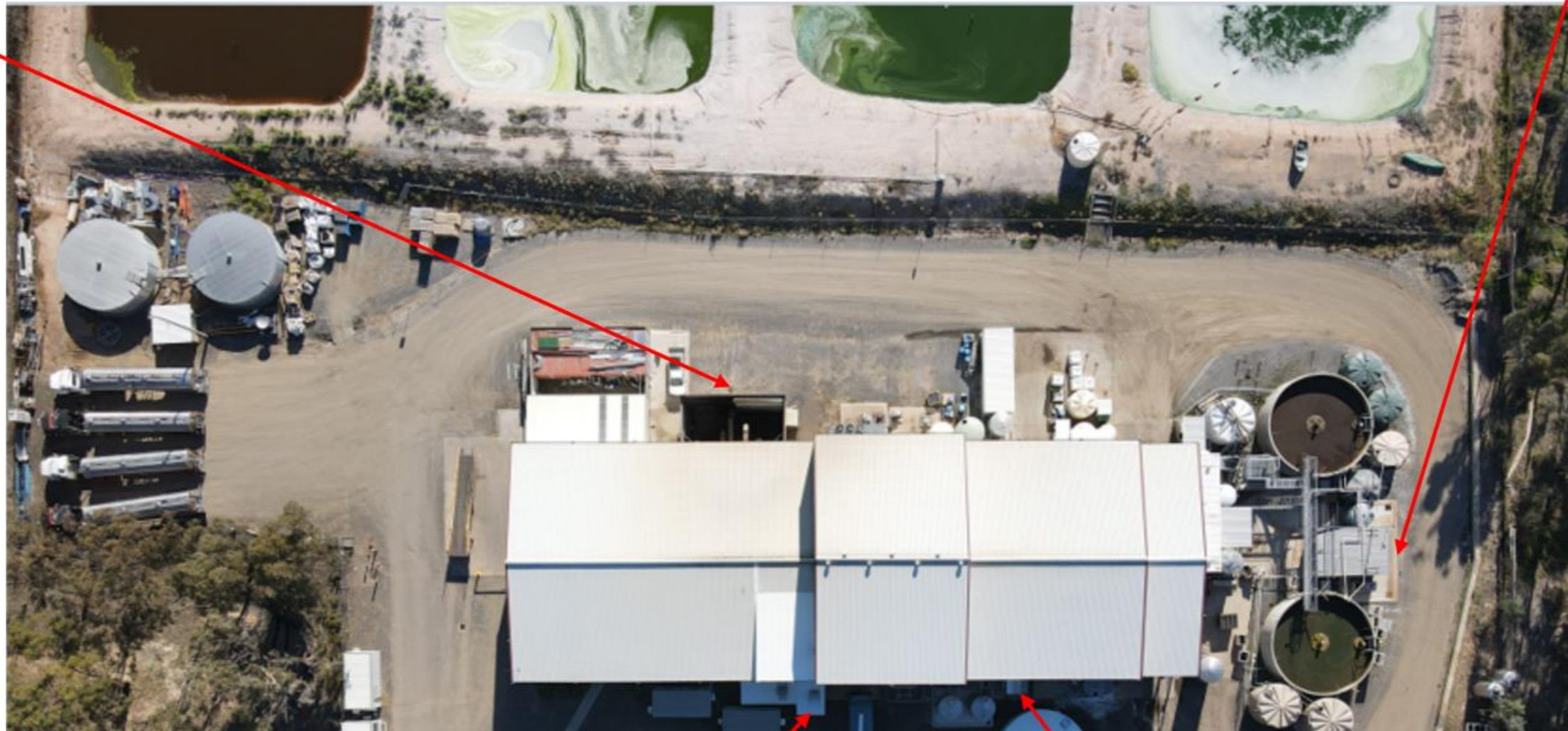


Attachment 2

Sonac Site - Equipment Noise Measurements, West & North 5/4/22

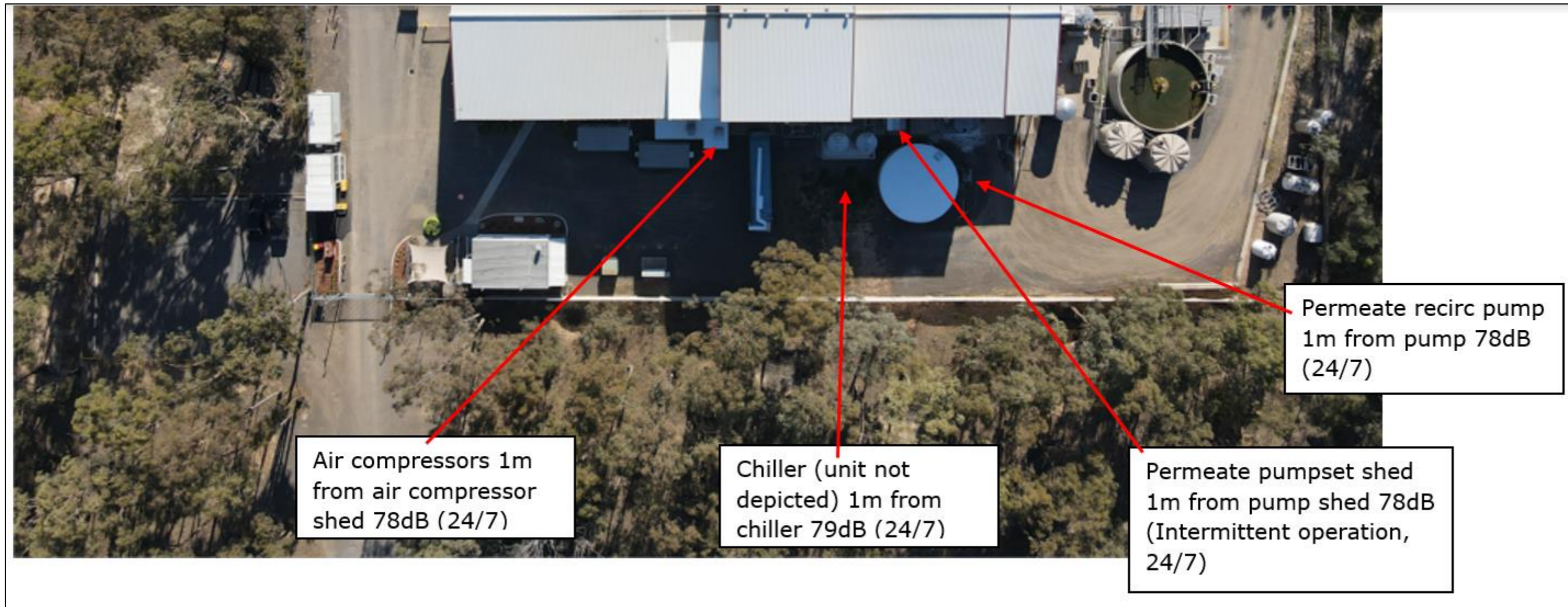
Dryer fan room shed
1m from shed 83dB.
(24/7)

Centrifuge shed 1m
from shed 82dB (to
be decommissioned)



Attachment 3

Sonac Site - Equipment Noise Measurements, East 5/4/22



Attachment 4

Sonac Site - Equipment Noise Measurements, West 5/4/22



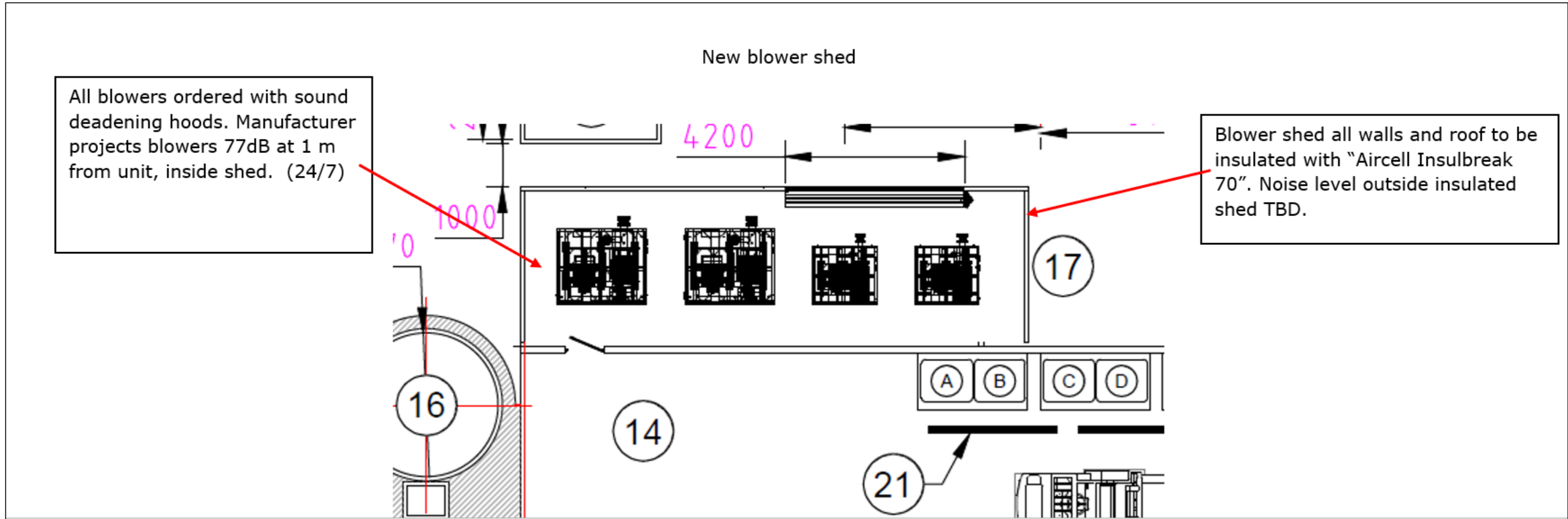
Attachment 5

Sonac Neighbouring Site – South, CHW WWTP 12/12/21



Attachment 6

Sonac Site – Proposed New Equipment Installation, Machine Noise Projections



<u>Machine noise each unit</u>			
Sound pressure level without hood approx.	$L_p(A)$	dB(A)	109
Sound pressure level with hood approx.	$L_p(A)$	dB(A)	77
Measured in the free field in 1 m distance from the outline of the unit without radiating noise of the pipe (tolerances ± 2 dB(A)), in accordance with DIN EN ISO 2151.			

Attachment 7

Sonac Site – Proximity to Nature Conservation Reserves

